



HABITAR LA POST·PANDÈMIA
HABITAR LA POST·PANDEMIA
INHABITING THE POST·PANDEMIC

2ND 'NEW HOUSING STRATEGIES' COMPETITION:
INNOVATION FOR SOCIAL AND HOUSING
RESILIENCE DURING LOCKDOWN.

COMPETITION RULES



▲ CONTENTS

SUMMARY	1
COMPETITION GOALS	1
PARTICIPANT REQUIREMENTS	2
SUBMISSION REQUIREMENTS	3
ASSESSMENT CRITERIA	4
PANEL	4
AWARDS	5
COMPETITION SCHEDULE	6
EXHIBITION AND PUBLICATION	7
INTELLECTUAL PROPERTY RIGHTS	7
QUERIES AND CLARIFICATIONS	7
ACCEPTANCE OF THE COMPETITION RULES	8
ANNEX: INFORMATION ON THE DWELLING AND THE SOCIAL UNIT	9

▲ SUMMARY

The COVID-19 pandemic forced us all to confine ourselves in our homes. During the 98-day state of emergency in Spain, the daily life of households and their immediate social and urban environment was changed: a new domesticity emerged across the whole of society as a result of this exceptional situation.

Following the lockdown experienced in the Comunitat Valenciana the Càtedra Innovació en Habitatge of the Universitat Politècnica de València (UPV), the Escuela Superior de Enseñanzas Técnicas of the CEU Cardenal Herrera University (CEU UCH), and the Instituto Valenciano de la Edificación (IVE) have decided to jointly contribute to a characterization of this situation, highlighting its problems and putting forward possible solutions. We therefore invite participants to enter a competition comprising two phases and whose ultimate aim is **the design of innovative spatial solutions for the improved adaptability of housing when faced with similar risks in the future.**

Based on reflections arising from the lockdown experience, we welcome proposals for the modification of a dwelling belonging to the social housing owned by the Valencian government and run by its company Entitat Valenciana d'Habitatge i Sòl (*Generalitat Valenciana, Vicepresidència Segona / Conselleria d'Habitatge / Arquitectura Bioclimàtica*).

The competition is open to all students of architecture at universities in the Comunitat Valenciana.

▲ COMPETITION GOALS

This initiative forms part of the strategic vision set out by IVE in its survey into the impact of lockdown on domestic life, entitled "*Nuestras viviendas en tiempos de COVID-19. Encuesta sobre el impacto del confinamiento por COVID-19 en la vida doméstica*" (results report, June 2020), and by the Càtedra Innovació en Habitatge in the first edition of the "[Nuevas Estrategias Habitacionales](#)" ("New Housing Strategies") competition.

Defining the make-up of a dwelling and ensuring its adaptability to changing times is a constant concern in the field of architecture. The recent lockdown in response to the COVID-19 pandemic has revealed social and housing problems deriving from the environments in which we live and their close surroundings. By considering lockdown experiences, we can see that there is an imbalance between available housing and the specific needs of inhabitants from multiple groups and social backgrounds.

This competition presents participants with an opportunity to propose innovative architectural solutions to ensure that social housing is appropriate for similar situations. **The aim is to map the various situations which have occurred and to use these as a basis for new living space proposals.**

Housing is the physical support which enables us to live alongside other people, and, as such, it must be able to meet the demands of fairness during

temporary situations of emergency as much as in normal conditions. In addition to reconciling employment and professional activities with care for dependents, or intergenerational coexistence in general, further specific factors affecting living spaces have emerged, such as teaching and working from home, the functional alteration of habitual living areas, or the isolation of people afflicted with illness.

This initiative aims to be the bridge between an introspective reflection on the lived experience of lockdown and a considered projection of the key associated problems in a given context. To this end, we take as a case study a typical dwelling forming part of the social housing provided in the Comunitat Valenciana –while also taking into consideration its situation as a single housing unit within a larger block of such dwellings in a given urban context– and our aim is to improve its adaptability to a lockdown situation through spatial innovation.

The **competition** consists of **two phases**:

- ▲ In the first phase, the objective is to map the lockdown situation in the specified dwelling for the competition. **The aim is to reflect upon a particular problem, based on the experiences of the participant, but also by placing themselves in a particular physical context (dwelling place, apartment block, urban area) and a social context (social unit), previously provided** (see the [annex](#) to the competition rules). Thus, the goal is to demonstrate through graphic material the diversity of problems facing those in such a social unit during lockdown, as well as presenting solutions that could have been implemented to resolve these, but without undertaking permanent modifications to the spatial configuration of the dwelling. The kind of modifications that should be considered include adjustments involving “**no building work**”, based on changes in use, furniture, allocation of spaces, etc.
- ▲ Success in the first phase will enable participation in a second phase in which a proposal can be made. **This will concern alterations to the dwelling and/or common areas of the apartment block based on innovative solutions to provide improved adaptability to similar future situations.** It is expected that proposed solutions will include strategies for flexibilization, socialization, alternative organization of internal space, increase of exterior space, etc., and that these strategies will be capable of **being reproduced in other types of housing.**

▲ PARTICIPANT REQUIREMENTS

The competition is open to those enrolled on bachelor’s, master’s or doctoral degree programmes at universities in the Comunitat Valenciana in 2019-2020. You must submit proof of your enrolment with your application form.

You may enter the competition as an individual or as part of a team. In the case of team entries, each individual member must fulfil the requirements of individual participation. Each team shall consist of a maximum of four members. Each team shall designate a spokesperson, responsible for communicating on behalf of the team as a whole. Each participant, whether or not he/she belongs to a team, may only submit a single proposal.

▲ SUBMISSION REQUIREMENTS

The required files may be submitted in Valencian, Spanish or English. The competition consists of two phases, each with its own requirements with regard to information and submission procedures, as detailed below.

Anonymity must always be maintained in the files provided. A project slogan and a unique code shall be used to identify each entry across the two phases. The slogan may not be more than 25 characters (including spaces), and the code must consist of four non-consecutive digits.

Failure to comply with the requirements detailed in this section will result in disqualification.

PHASE 1 OF THE COMPETITION | *'Mapping the Lockdown'*

Submissions will be online only, using the entry form on the competition website. Proof of compliance with the enrolment requirements ((proof of registration, individual file for each of the participants, maximum size of 0.5 Mb) is required. A maximum of three files (maximum size of each file 7.5 Mb) containing the following information may be submitted:

- ▲ **Drawings, photographs, montages or videos** that characterize the lockdown situation and a possible “no building work” solution in the specified physical context (dwelling, apartment block, urban area) and social context (the cohabitants composing the social unit) (see the annex to the competition rules).

The information must be provided in a square format (both the image and the video), specifically:

- ▲ 300dpi JPG file (s) and up to 2500x2500 pixels in RGB format.
- ▲ Video(s) in mp4 format. In this case, you must indicate which frame will be the cover image.

PHASE 2 OF THE COMPETITION | *'Habitat Adaptation Proposal'*

Submissions will be online only and must be sent to the email address: habitarlapostpandemia@gmail.com. Prior to submission, all finalists will be provided with a PDF template outlining the requirements regarding format, content and maximum file size (anonymity, slogan, logos, scales, etc.), as well as a range of technical parameters concerning the dwelling which must be maintained or taken into consideration for any alterations.

The following information will be requested at this stage:

- ▲ **Scale drawings** of the architectural proposal.
- ▲ **Brief descriptive report** (300 words maximum).
- ▲ **Any supplementary images or audiovisual materials** enabling a better understanding of the proposal.

▲ ASSESSMENT CRITERIA

In assessing **the first “no building work” phase** of the competition, the focus will be on the following aspects:

- ▲ Ability and quality of the representation of the lockdown situation.
- ▲ Diversity of the cohabitees selected by the participants.
- ▲ Complexity of the functional reality and uses of the dwelling by the cohabitees.
- ▲ Variety of possible options offered for transforming the space without building work taking place.

In the **second phase**, with the physical transformation of the dwelling, particular attention will be paid to the following:

- ▲ Compliance of the proposal with the competition rules.
- ▲ Contribution made to the architectural definition of new housing strategies.
- ▲ Innovative nature of the proposal.
- ▲ Efficient use of resources for the implementation of the proposal, particularly regarding budgetary concerns.
- ▲ Applicability of the proposal to new cases.
- ▲ Expressive quality of the reflections made and proposals put forward.

▲ PANEL

The assessment panel will consist of representatives from each of the following bodies:

- ▲ Càtedra Innovació en Habitatge de la Universitat Politècnica de València.
- ▲ Instituto Valenciano de la Edificación.
- ▲ Entitat Valenciana d'Habitatge i Sòl.
- ▲ Escuela Técnica Superior de Arquitectura de la Universitat Politècnica de València.
- ▲ Escuela Superior de Enseñanzas Técnicas de la Universidad CEU Cardenal Herrera.

In addition, the panel will include at least two architects with a background in social housing.

A further member of the panel will be drawn from one of the institutions participating in the organization of the competition. He or she will perform the role of Panel Secretary, and may participate in the panel's discussions, but will not have a vote.

▲ AWARDS

PHASE 1 OF THE COMPETITION | *'Mapping the Lockdown'*

In the first phase of the competition, out of all the proposals that comply with the competition rules, a maximum of 10 entries will be selected and these will then proceed to the next stage. These entries will be awarded an official certificate recording this achievement and will be awarded the sum of €120. In addition, the entries selected will form part of a subsequent exhibition and publication (see the relevant section below).

PHASE 2 OF THE COMPETITION | *'Habitat Adaptation Proposal'*

After the final deliberation of the panel, a single prize will be awarded to the winning entry, consisting of €800. In addition, the panel reserves the right to award up to two honourable mentions, with these entries each being awarded a collection of books and magazines, depending on the quality of the proposals received. Official certificates will also be awarded by the panel, recording these achievements. The panel reserves the right not to make an award.

The panel reserves the right to make a readjustment in the distribution of the economic prizes established according to the number of finalists selected in phase 1, in case of having to award ex aequo prizes or special mentions.

The economic endowment of the prizes will be subject to the corresponding withholding established by current regulations. The panel reserves the right not to make an award for candidacies not reaching the required quality or other reasons that will be duly reasoned.

▲ COMPETITION SCHEDULE

I. PUBLICATION OF THE COMPETITION RULES. QUERIES

- ▲ The competition rules and the documentation requirements for entries will be available at [CaLab – Casa Laboratorio website, in the Càtedra Innovació en Habitatge](#) section.
- ▲ Queries can be submitted in writing to habitarlapostpandemia@gmail.com up to 30th September at 12 noon (Madrid Central European Summer Time). Responses will be made on an individual basis.

II. PHASE 1 OF THE COMPETITION | *'Mapping the Lockdown'*

- ▲ Ends on Tuesday, 13th October 2020 at 12 noon (Madrid Central European Summer Time).
- ▲ Submission of entries via the application form on the CaLab – Casa Laboratorio website, in the [CaLab – Casa Laboratorio website, in the Càtedra Innovació en Habitatge](#) section.
- ▲ Official communication of those selected during this phase of the competition will be made within a maximum of 10 calendar days on the CaLab – Casa Laboratorio website, in the [CaLab – Casa Laboratorio website, in the Càtedra Innovació en Habitatge](#) section.

III. PHASE 2 OF THE COMPETITION | *'Habitat Adaptation Proposal'*

- ▲ Ends on Monday, 30th November 2020, at 12 noon (Madrid Central European Summer Time).
- ▲ Proposals should be submitted by email habitarlapostpandemia@gmail.com, clearly indicating the title of the competition in the subject line. The organizers of the competition will acknowledge receipt of all proposals.

IV. CONCLUSION OF THE COMPETITION AND PUBLIC INFORMATION

- ▲ The award-winners of the second phase of the competition will be officially announced within a maximum of 15 calendar days on the [CaLab – Casa Laboratorio website, in the Càtedra Innovació en Habitatge](#) section.

▲ EXHIBITION AND PUBLICATION

A public exhibition and catalogue will be made based on the results of the competition. Aside from the possibility of organizing a touring exhibition, an online publication and virtual exhibition will be hosted on the [CaLab – Casa Laboratorio website, in the Càtedra Innovació en Habitatge](#) section. The identities of participants will be made public in all communications and announcements.

The organizers of the competition reserve the right to expand the number of selected proposals included in the exhibition and catalogue, in addition to those of the finalists and the award-winning proposals.

▲ INTELLECTUAL PROPERTY RIGHTS

Competition participants will retain the intellectual property rights of the proposals submitted, but will assign to the competition organizers the rights of exhibition, reproduction and publication corresponding to the subject matter of the competition.

Proposals may be reproduced for dissemination by the organizers of the competition, in addition to any promotion activities for this competition.

The organizers will include the names of the relevant participants in each publication, exhibition or activity in which a proposal is incorporated. Likewise, participants must undertake to refer to the competition organizers in any subsequent publication in which their proposal appears.

▲ QUERIES AND CLARIFICATIONS

Queries regarding the competition rules must be sent by email to habitarlapostpandemia@gmail.com before 12 noon on 30th September, 2020(Madrid Central European Summer Time). They should be clear, precise and specific, indicating the title of the competition in the subject line.

All the information related to the competition, as well as the results of each phase, will be published on the CaLab – Casa Laboratorio website, in the [CaLab – Casa Laboratorio website, in the Càtedra Innovació en Habitatge](#) section.

▲ ACCEPTANCE OF THE COMPETITION RULES

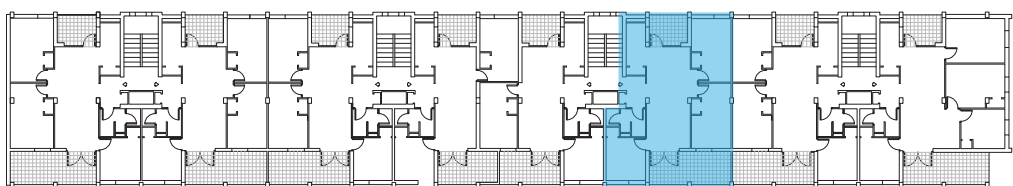
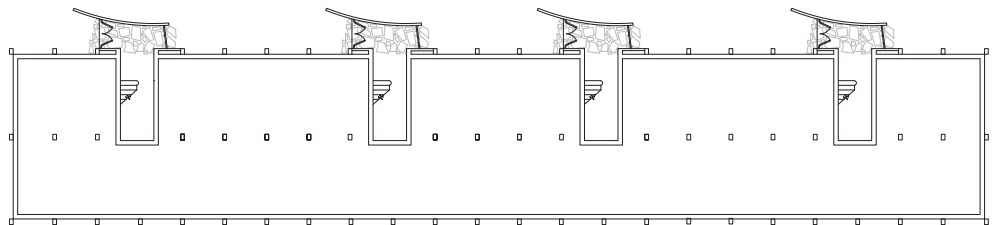
For the avoidance of any doubt and resolution of any conflict that may arise, participation in the competition implies the full acceptance of the competition rules, as well as the express recognition of the participants of the validity of the criteria used and the interpretation of these rules by the UPV's Càtedra Innovació en Habitatge.

▲ ANNEX. INFORMATION REGARDING THE DWELLING AND THE SOCIAL UNIT

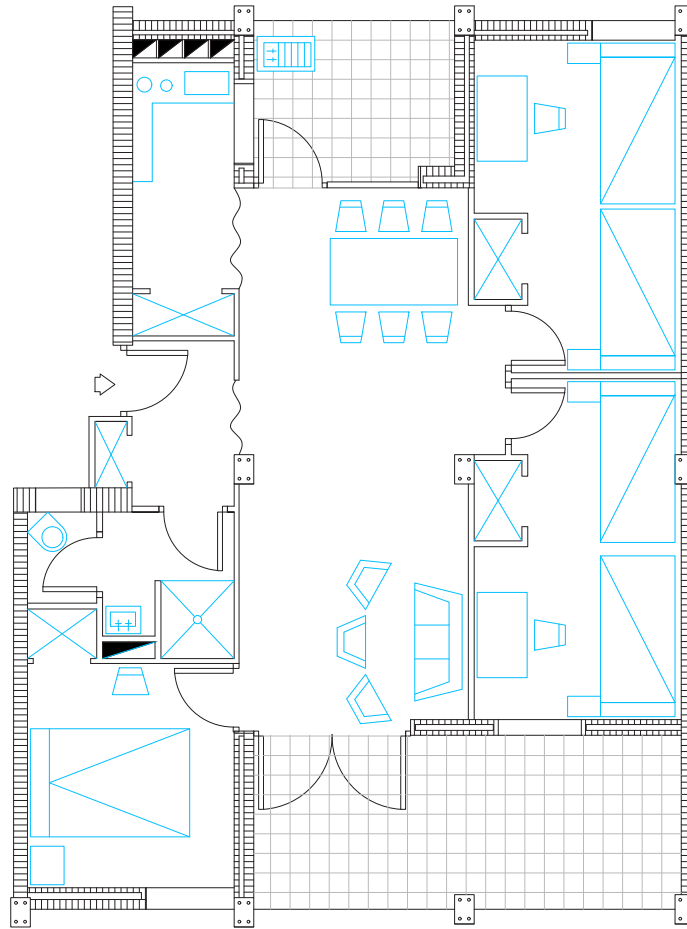
The dwelling which the competition concerns consists of 54 m² of usable space and is located at no. 6, Calle Pintor Parra, within the Virgen del Carmen housing estate in the *Poblats Marítims* area of Valencia. For the competition purposes, both housing and common existing spaces should be considered (stairways and access portal). The exact home is the one represented in these bases, but the floor level can be choose. It has been selected for possessing typical features of the public housing slated for improvement work by the Valencian Government's *Entitat Valenciana d'Habitatge i Sol (Generalitat Valenciana. Vicepresidència Segona i Conselleria d'Habitatge i Arquitectura Bioclimàtica)*. It suffers from the most prevalent and common issues affecting social housing in the *Comunitat Valenciana* and can therefore serve as a case study for future initiatives on a larger scale.



The digitized information regarding the layout of the house and photographs can be downloaded from the CaLab – Casa Laboratorio website, in the [CaLab – Casa Laboratorio website, in the Càtedra Innovació en Habitatge](#) section.



Floor plans of Virgen del Carmen housing block.



Apartment floor plan

The **social unit** that would live in this dwelling may consist of between three and five people, who may be adults or minors of any age. The combination of these cohabiters, as well as their specific profiles (workers, tele-workers, unemployed, students of different types, healthy, afflicted with coronavirus, dependents, etc.), will be decided upon by the competition participants. The panel will place particular value on proposals involving greater diversity in these social units, as well as on the complexity of the profiles of their members and their needs for the use or adaptation of the space.

Proposals which involve an incorrect number of members in the social unit will be disqualified the competition.



Organization | Débora Domingo Calabuig (Universitat Politècnica de València), Laura Lizondo Sevilla (Universitat Politècnica de València), Javier Rivera Linares (Universidad CEU – Cardenal Herrera), Ana Ábalos Ramos (Universidad CEU – Cardenal Herrera), Alberto Rubio Garrido (Instituto Valenciano de la Edificación)
Design and dissemination | Júlia Martínez Villaronga